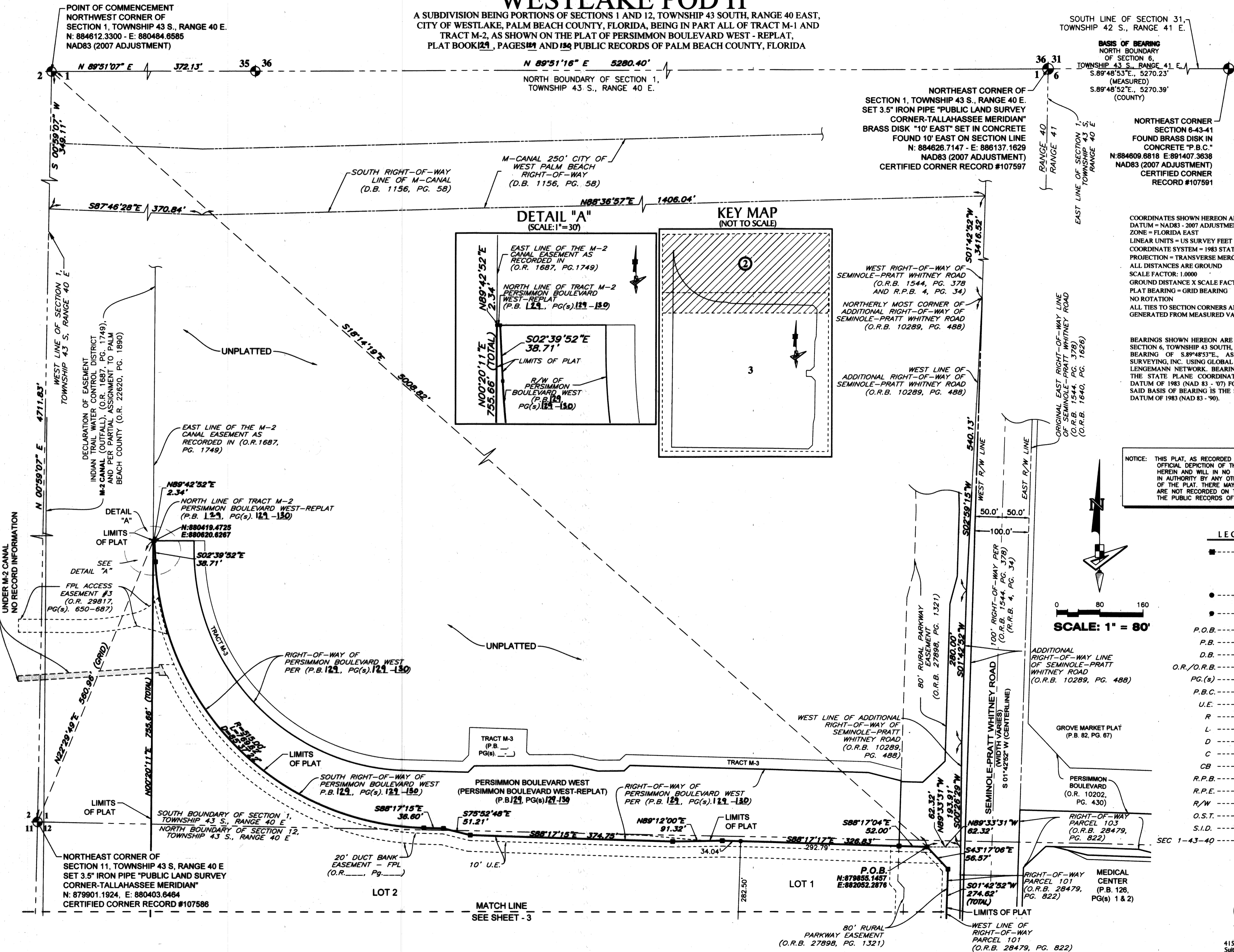


WESTLAKE POD H

A SUBDIVISION BEING PORTIONS OF SECTIONS 1 AND 12, TOWNSHIP 43 SOUTH, RANGE 40 EAST,
CITY OF WESTLAKE, PALM BEACH COUNTY, FLORIDA, BEING IN PART ALL OF TRACT M-1 AND
TRACT M-2, AS SHOWN ON THE PLAT OF PERSIMMON BOULEVARD WEST - REPLAT,
PLAT BOOK 129, PAGES 121 AND 130 PUBLIC RECORDS OF PALM BEACH COUNTY, FLORIDA

136



NORTH BOUNDARY OF SECTION 1,
TOWNSHIP 43 S., RANGE 40 E.

SOUTH LINE OF SECTION 31,
TOWNSHIP 42 S., RANGE 41 E.

NORTHEAST CORNER OF
SECTION 1, TOWNSHIP 43 S., RANGE 40 E.
SET 3.5" IRON PIPE "PUBLIC LAND SURVEY
CORNER-TALLAHASSEE MERIDIAN"
BRASS DISK "10" EAST" SET IN CONCRETE
FOUND 10' EAST ON SECTION LINE
N: 884626.7147 E: 886137.1629
NAD83 (2007 ADJUSTMENT)
CERTIFIED CORNER RECORD #107597

NORTHEAST CORNER
SECTION 8-43-41
FOUND BRASS DISK IN
CONCRETE "P.B.C."
N: 884609.6818 E: 891407.3638
NAD83 (2007 ADJUSTMENT)
CERTIFIED CORNER
RECORD #107591

COORDINATES SHOWN HEREON ARE FLORIDA STATE PLANE GRID
DATUM = NAD83 - 2007 ADJUSTMENT
ZONE = FLORIDA EAST
LINEAR UNITS = US SURVEY FEET
COORDINATE SYSTEM = 1983 STATE PLANE
PROJECTION = TRANSVERSE MERCATOR
ALL DISTANCES ARE GROUND
SCALE FACTOR = 1.0000
GROUND DISTANCE X SCALE FACTOR = GRID DISTANCE
PLAT BEARING = GRID BEARING
NO ROTATION
ALL TIES TO SECTION CORNERS AND QUARTER CORNERS ARE
GENERATED FROM MEASURED VALUES

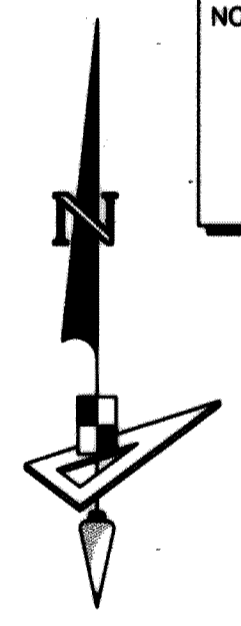
BEARINGS SHOWN HEREON ARE BASED ON THE NORTH LINE OF
SECTION 6, TOWNSHIP 43 SOUTH, RANGE 41 EAST, HAVING A GRID
BEARING OF S 89°48'53"E, AS DETERMINED BY GEOPOINT
SURVEYING, INC. USING GLOBAL POSITIONING SYSTEMS (GPS) AND
LENGEMANN NETWORK. BEARINGS SHOWN HEREON, REFER TO
THE STATE PLANE COORDINATE SYSTEM, NORTH AMERICAN
DATUM OF 1983 (NAD 83 - 07) FOR THE EAST ZONE OF FLORIDA.
SAID BASIS OF BEARING IS THE SAME IN THE NORTH AMERICAN
DATUM OF 1983 (NAD 83 - 90).

NOTICE: THIS PLAT, AS RECORDED IN ITS GRAPHIC FORM, IS THE
OFFICIAL DEPICTION OF THE SUBDIVIDED LANDS DESCRIBED
HEREIN AND WILL IN NO CIRCUMSTANCES BE SUPPLANTED
IN AUTHORITY BY ANY OTHER GRAPHIC OR DIGITAL FORM
OF THE PLAT. THERE MAY BE ADDITIONAL RESTRICTIONS THAT
ARE NOT RECORDED ON THIS PLAT THAT MAY BE FOUND IN
THE PUBLIC RECORDS OF THIS COUNTY.

LEGEND

- --- INDICATES (P.R.M.) PERMANENT REFERENCE MONUMENT - 4"x4" CONCRETE MONUMENT LB7768, UNLESS OTHERWISE NOTED.
- --- INDICATES (P.C.P.) PERMANENT CONTROL POINT LB7768
- --- INDICATES (S.I.R.) SET IRON ROD LB7768
- P.O.B. --- POINT OF BEGINNING
- P.B. --- PLAT BOOK
- D.B. --- DEED BOOK
- O.R./O.R.B. --- OFFICIAL RECORDS BOOK
- PG.(s) --- PAGE(S)
- P.B.C. --- PALM BEACH COUNTY
- U.E. --- UTILITY EASEMENT
- R --- RADIUS
- L --- ARCH LENGTH
- D --- DELTA ANGLE
- C --- CHORD LENGTH
- CB --- CHORD BEARING
- R.P.B. --- ROAD PLAT BOOK
- R.P.E. --- RURAL PARKWAY EASEMENT
- R/W --- RIGHT-OF-WAY
- O.S.T. --- OPEN SPACE TRACT
- S.I.D. --- SEMINOLE IMPROVEMENT DISTRICT
- SEC 1-43-40 --- SECTION 1, TOWNSHIP 43 SOUTH, RANGE 40 EAST

SCALE: 1" = 80'



MATCH LINE
SEE SHEET - 3

GeoPoint
Surveying, Inc.

4152 W. Blue Heron Blvd. Phone: (561) 444-2720
Suite 105 www.geopointsurvey.com
Riviera Beach, FL 33404 Licensed Business Number LB 7768

Sheet No. 2 of 3 Sheets